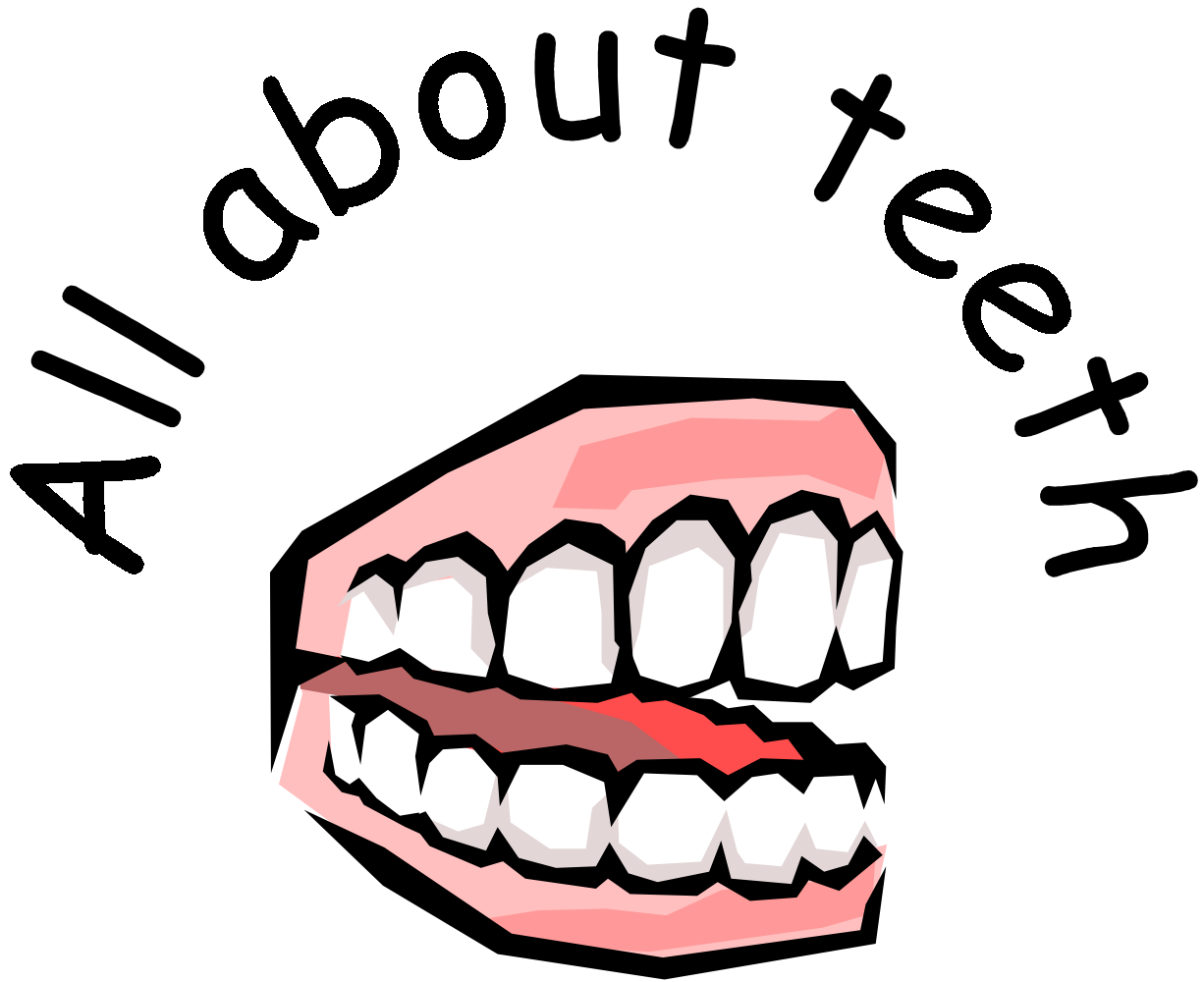


Name:

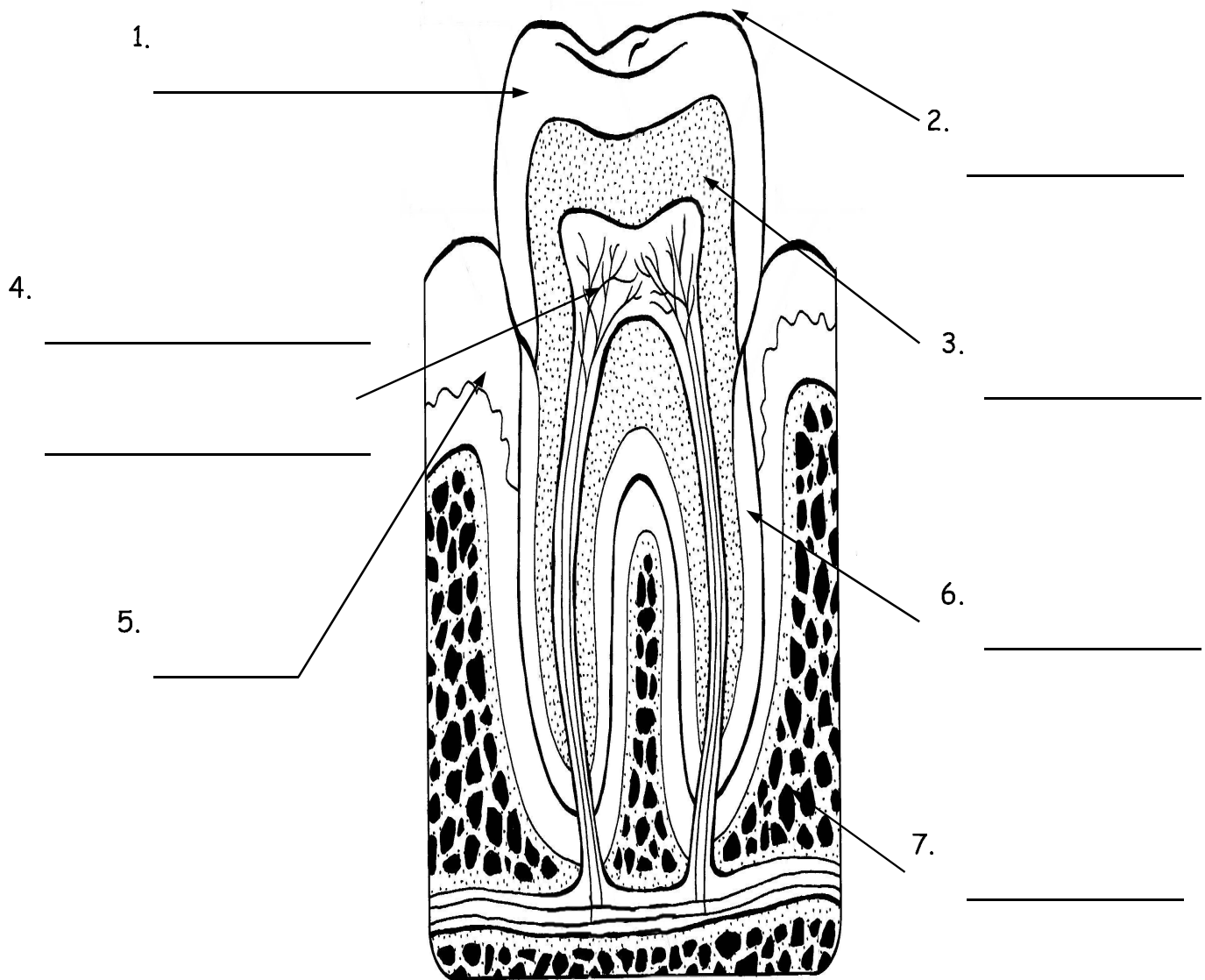


- finding out about different types of teeth and the inside of a tooth.
- what makes holes in our teeth?

# Investigation 1 - the inside of a tooth.

From the information you can find label the different parts of this tooth.  
You'll need to use all of the following words:

Enamel    Dentine    Blood vessels and nerves in pulp chamber  
Gum    Jaw Bone    Crown    Cement



## Investigation 2 - what makes holes in our teeth?

### **Bacteria cause tooth decay**

Lots of bacteria live in our mouths. Any sugar left in your mouth after eating food is eaten by the bacteria. The bacteria form a white sticky slime over your teeth called plaque. The plaque contains acid which rots away your tooth enamel and weakens the tooth. It can lead to a hole in the enamel. This is called a cavity.

The experiments we have done use eggshells. They are made of a similar substance to tooth enamel (though eggshells are much thinner than the enamel on your teeth!).

Look at the experiments that we have done. Record what you notice about each one. What effect has the liquid had on the eggshell? Has the eggshell changed colour? Look at the surface of the eggshell. Has the surface started to bubble? (If so the liquid is having the effect of an acid - it is rotting away the coating on the eggshell).

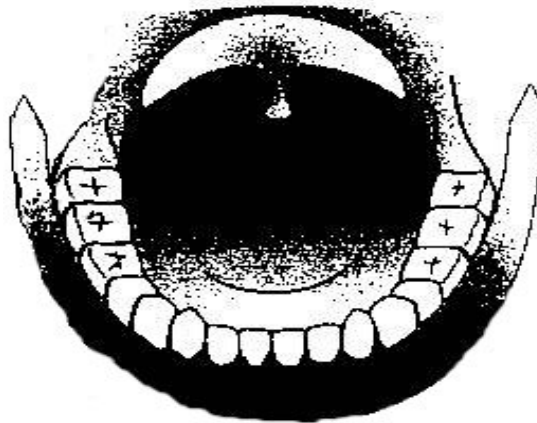
The eggshell was in.....	After one day I noticed the eggshell had.....
clear vinegar - left for two days	
coca-cola	
fruit squash	
water	

What is the best way to stop plaque forming on your teeth?

## Investigation 3 - finding out about different types of teeth

There are 4 different types of teeth in a human mouth. In the diagram below colour:

Incisors - blue - there are 4  
Canines - red - there are 2  
Pre molars - green - there are 4  
Molars - yellow - there are 6



Fill in the missing words.

Adult humans have \_\_\_\_\_ teeth. There are 16 on the bottom and 16 on the top.

Incisors are used for \_\_\_\_\_ and \_\_\_\_\_.

Canines are used for \_\_\_\_\_ and \_\_\_\_\_.

Molars are used for \_\_\_\_\_ and \_\_\_\_\_.

Name an animal with long canine teeth? Why does this animal need long canine teeth?

Name an animal with no canine teeth? Why doesn't this animal need canine teeth?



## Your Mouth - the inside story



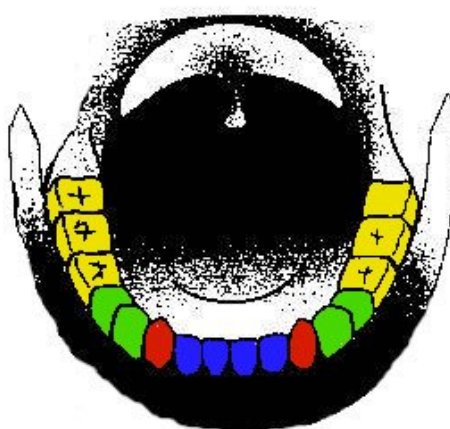
There are 4 different types of teeth in a human mouth. Imagine you are eating a carrot - what does each type of tooth do?

**Incisors** - blue - there are 4 -  
these are used for cutting and slicing

**Canines** - red - there are 2 -  
these are used for gripping and tearing

**Pre molars** - green - there are 4

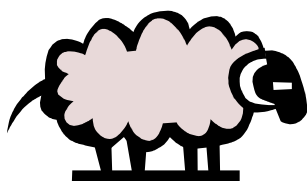
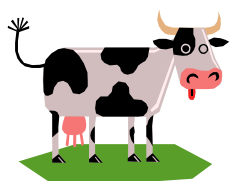
**Molars** - yellow - there are 6  
Pre-molars and molars are used for crushing and chewing



Some animals have long canine teeth. They use them for gripping and tearing their food. They are usually meat eaters - the carnivores. Here are some clues.



Some animals have no canine teeth. They use their incisors & molars for most of their food. They are usually the herbivores - plant eaters. Here are some clues.



## Investigation 2 - what makes holes in our teeth?

Read through this part together. Point out that the thin coating on the eggshell is made of the same substance as the thick coating on their teeth - they will see this in investigation 1. Soaking the eggshell is like them drinking/eating sticky things and then not brushing their teeth. If they did this regularly then cavities would form

### Bacteria cause tooth decay

Lots of bacteria live in our mouths. Any sugar left in your mouth after eating food is eaten by the bacteria. The bacteria form a white sticky slime over your teeth called plaque. The plaque contains acid which rots away your tooth enamel and weakens the tooth. It can lead to a hole in the enamel. This is called a cavity.

The experiments we have done use eggshells. They are made of a similar substance to tooth enamel (though eggshells are much thinner than the enamel on your teeth!).

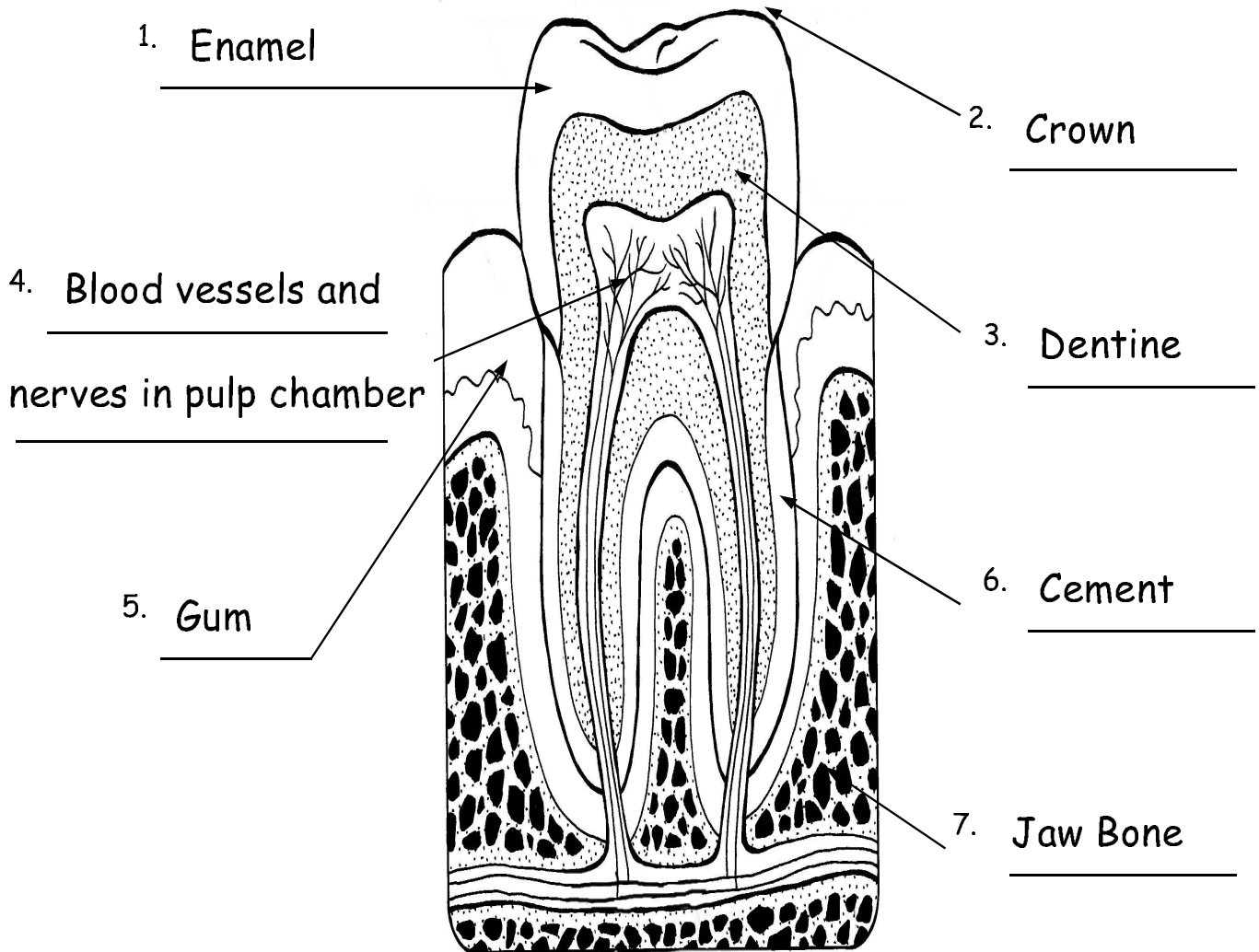
Look at the experiments that we have done. Record what you notice about each one. What effect has the liquid had on the eggshell? Has the eggshell changed colour? Look at the surface of the eggshell. Has the surface started to bubble? (If so the liquid is having the effect of an acid - it is rotting away the coating on the eggshell).

The eggshell was in.....	After one day I noticed the eggshell had.....
clear vinegar - left for a weekend	
coca-cola	
fruit squash	
water	

What is the best way to stop plaque forming on your teeth?  
Ask them for their ideas - try to encourage thoughts of good brushing habits, use of toothpaste, eating sweets after tea ( this reduces time that sugar remains in mouth and is better than snacking throughout day), visits to dentist, other dental products (floss/tape; mouthwash; disclosing tablets



# Your tooth - the inside story!



- 1 Label your diagram.
- 2 Colour each part with pencil crayon