
DentaleZ

Jason Hodkowski



Who is DentaleZ?

Who Are We?

- DentaleZ is a quality manufacturer of Chairs, Units, Lights, Stools, and Cabinets founded in 1958.
- Developed the J-Chair, the first chair that allowed a dentist to sit next to a reclined patient which greatly reduced the strain on the dentist's neck and back.
- All equipment/products are manufactured in our factory located in Bay Minette Alabama



DentalEZ Group Brands

- The DentalEZ Group consists of five brands including:
 - StarDental - handpieces
 - CustomAir – air compressors
 - RAMVAC – vacuum pumps
 - Columbia Dentoform – teaching models
 - Nevin Labs – lab casework and workstations



NuSimplicity Dental Chair



- The main objective when designing this chair was to minimize twisting and reaching with an ergonomic design that provides easy access to the oral cavity.
- The NuSimplicity Chair is simple to use, technology-friendly, and makes positioning easy with its height flexibility
- The chair is designed so that the Dentist can square his/her shoulders to the oral cavity without having to reach and put strain on the neck and lower back.

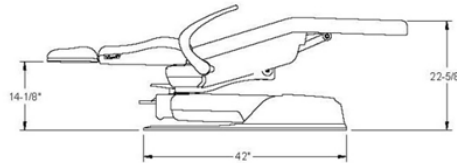
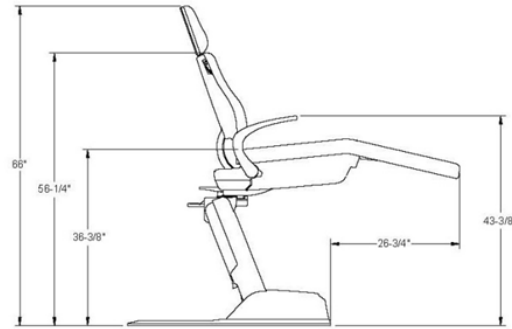
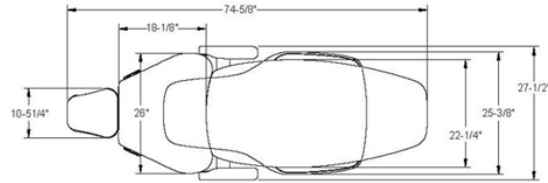
Thin Taper Back

- The thin, tapered back allows the best access to the oral cavity:
 - This allows the chair to be lowered into the users lap and prevents the need to raise your arms to perform dentistry.
- The tapered back allows the user to get closer to the patient avoiding the need to lean over and reach to access the oral cavity.



Height and Rotation

- The chair has a height range of
 - 14” at the lowest setting
 - 36” at the tallest setting
- This range allows ease of use by operators of all sizes and allows users to practice stand up dentistry.
- On the back of the chair, there is a break that allows for 60 deg. of rotation



Chair Base

- The rear of the steel base plate is tapered and designed for a dental stool to achieve close proximity to the patient.
- The base includes an easily visible illuminated "on" indicator and illuminated error code indicator
- Each chair is factory tested to lift a load of 665 lbs.
- The chair lifting mechanism is hydraulic for quiet reliable use.



Integrated Chair Controls Include:



- 3 Pre-Set Controls
- Auto Return
- Last Position
- And Manual Seat and Back Controls

Setting your Positions is as easy as 1, 2, 3!

- Pre-Set Positions
 - Position 1 – Maxillary Arch - position chair so the upper arch is perpendicular to the floor
 - Position 2 – Mandibular Arch – position chair so the lower arch is parallel to the floor
 - Position 3 – X-Ray/Oral Surgery/Stand up dentistry
 - Position A – Entry/Exit
 - Position L – Last Position



Setting New Positions: Position the chair and depress 1, 2, or 3 and hold until it beeps – Position is set!

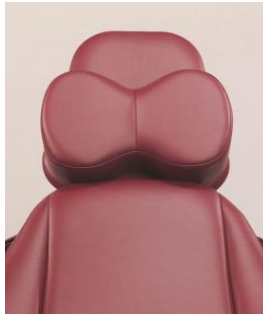
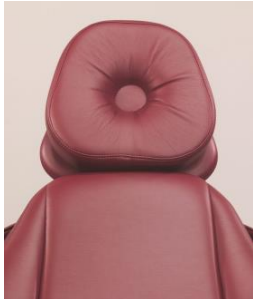
Arm Rests

- Made from durable cast aluminum arm.
- Arms can withstand 100+ pounds of downward force.
- Arm is available in upholstered and un-upolstered versions based on customers preference.
- Arm is released by pulling the arm outward and rotating downward



Headrest Options

- Chair comes a with double articulating headrest
- Other options available are:
 - 2 Magnetic Cushion Headrest
 - Magnetic Neck Support Headrest



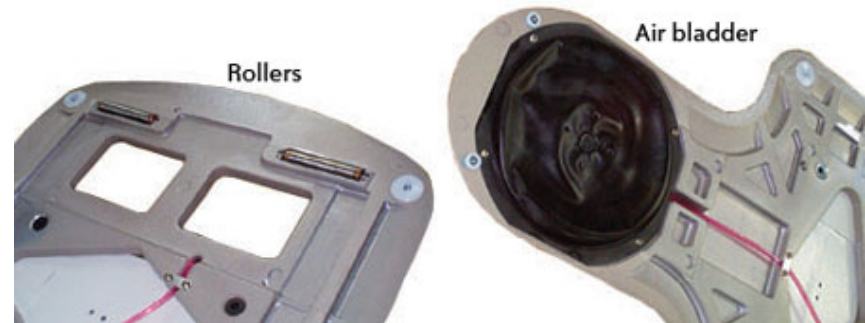
Technology Options

- 2 Optional USB Port for today's technology needs:
 - Power Only for charging
 - Integration Kit that allows access to a computer or inter oral camera
- Optional Wireless controls
 - Wireless foot control
 - Wireless touchpad



AirGlide System

- Air Glide feature, you simply activate the air regulator toggle on the chair's base
- The air pillow will inflate, lifting the chair off the floor and allowing rollers on the front of the base plate to contact the floor for smooth repositioning as desired.
- With the Air Glide on, you'll be able to take advantage of:
 - improved patient positioning
 - handicap access
 - ease of cleaning



Seating/Stools

- Choosing the right operator and assistant dental stools can help put you in the correct positions for maximum efficiency, comfort, and reduce physical strain.
- DentalEZ® Generation™ stools are ergonomically engineered to enable users to position themselves properly for virtually any procedure while minimizing stresses or strains related to the dental practice.

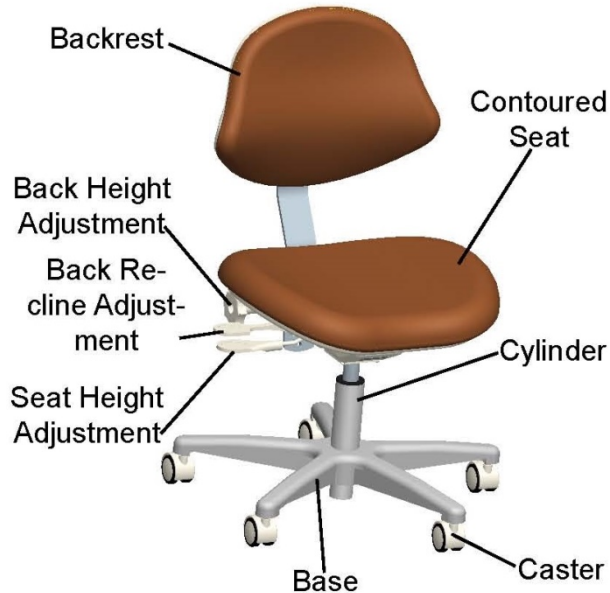


Proper Seating

- Proper seating is an essential need for a healthy career.
- Keys to proper seating include:
 - Feet flat on floor - shoulder width stance
 - Lower legs perpendicular to floor
 - Use of a contour seat that has a tilt feature that allows you to cant the seat 10-15 degrees
 - Firm lumbar pressure
 - The goal is to achieve a posture that ensures your shoulders are at rest, with upper arms resting at side of body



Doctors Stool



- Broad caster base and five casters to improve stability during position changes
- Adjustable back support on doctor's stools to facilitate balanced posture
- Easy height adjustment allowing relaxed positions for multiple operators while maintaining visual access to the oral cavity

Assistants Stool

- Side body support to allow comfortable, stable positioning during activities such as suctioning or retracting



Upholstery Cleaning - Light

- To remove light soil:
 - Prepare a solution comprised of one part neutral detergent (household dish washing liquid) and nine parts warm water
 - Apply the liquid solution to the upholstery using a sponge or soft, damp cloth. If necessary, a soft bristle brush may be used.
 - Using a soft cloth dampened in clean water, wipe away any residue and dry



Upholstery Cleaning - Heavy

- To remove stains using bleach:
 - Prepare a solution comprised of one part household bleach (sodium hypochlorite) and nine parts water.
 - Apply the bleach solution to the stain using a dampened, soft, white cloth.
 - Allow the bleach solution to puddle on the affected area, or apply a bleach solution-soaked cloth to the area for approximately 30 minutes.
 - Using a soft cloth dampened in plain water, rinse the treated area thoroughly to remove any bleach residue.



Restore Upholstery

- To restore luster:
 - Apply a light coat of spray furniture wax containing lemon.
 - Wait 30 seconds and lightly buff the surface using a clean, white cloth.



Delivery System



- The Galaxy delivery head is mounted to our Magellan arm for easy left/right usability
- Quick Disconnect Clean Water comes as a standard feature
- Unit council incorporates a self contained solids separator for ease of changing.
- Unit cover is magnetic for easy removal and access to the inside of the unit,

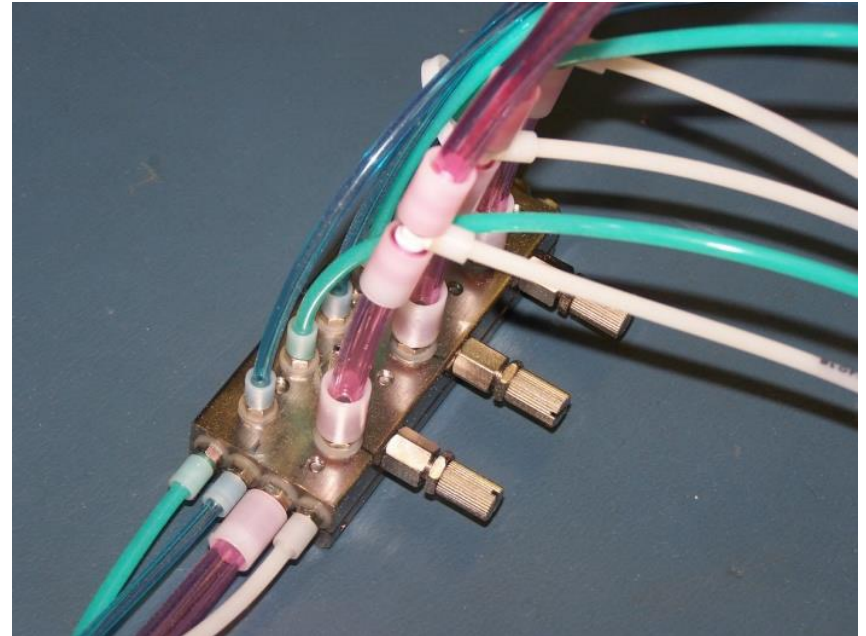
Galaxy® Delivery Units

- Unit mounted to our Magellan arm for left/ right capability
- Handpiece Management
 - Up to (4) handpiece hangers
 - Up to (2) static hangers



Internal Components

- Galaxy heads standard with die cast aluminum pinch valve system providing years of reliable performance.
- This Pinch Valve System has been proven for over 25 years in the dental industry
- This provides an efficient, continuous supply of air with no metal parts in contact with water eliminating corrosion problems.



Delivery Unit Add-Ons:

- The **Ultrasonic Integrated Scaler** has an electronic module that is fully integrated into the DentalEZ dental treatment unit. This saves valuable countertop space in treatment room (1)
- Optional **Integrated Sopro Camera** handpieces can be connected and disconnected very easily (2)
- Our **LED Curing Light** has a durable anodized aluminum housing that is self-cooling, silent, shock-resistant and easy to clean (3)
- **Piezo Scaler** is a new generation multi-purpose ultrasonic module that offers a wide range of power for flexibility (4)



Rear Assistant's Instrumentation



- Simple compact footprint
- Centrally located solids collector
- Optional integrated touchpad for controlling the chair
- Swivel mount for easy Left/Right usability

EverLight

- DentaleZ was the first to bring 100% direct LED to the dental industry
- Advanced 12 LED light technology that offers:
 - Cool crisp lighting
 - Quiet operation with use out a fan
 - Precision Lighting
- All with out the need of a reflector



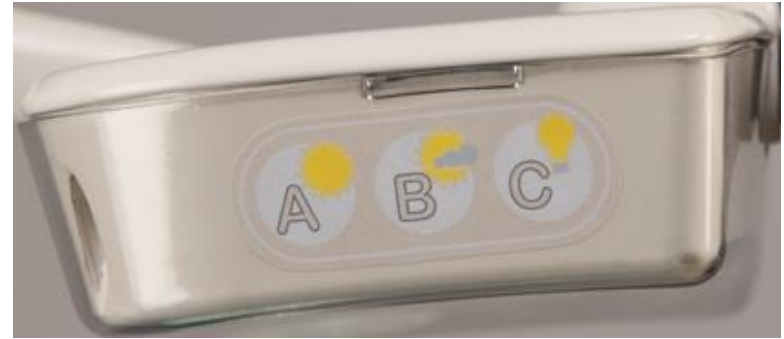
Ever Light Positioning

- 3 axis adjustment for positioning flexibility
- Conveniently located master on/off switch on the rear of the light housing
- Fits standard 2” light post for simple replacement



Color/Lux Settings

3 Kelvin Color Temperature Settings



3 Lux Intensity Settings



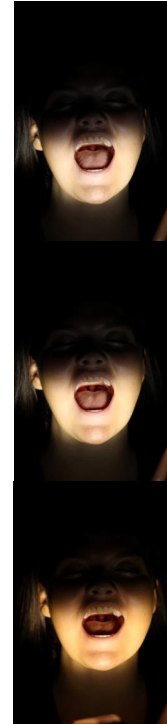
3 Intensity Settings



- 3 Intensity Settings
 - 1) Low – 15,000 Lux
 - 2) Medium – 25,000 Lux
 - 3) High – 30,000 Lux
- What is Lux?
 - The measure of the intensity of the light hitting or passing through a surface

3 Kelvin Colors

- Sun – 5800° Kelvin – Color Matching
- Sun/Bulb - 4500° Kelvin – Operative setting
- Bulb - 3200° Kelvin – composite setting



Cleaning/Disinfecting Unit & Light

- To clean all surfaces, use a typical ALCOHOL-FREE, commercial cleaner or a solution of neutral liquid detergent and water.
- The following disinfectants are acceptable to use:
 - Caviwipes
 - Banicide
 - Coecide





Thank You!

We at DentalEZ are happy to be a part of this evaluation process and thank you for the opportunity!

