

Mounting Master Casts on Hanau Wide-View Articulator



Hanau® Wide-View
semi-adjustable articulator

Hanau® Wide-Vue Articulator



**Hanau® Wide-Vue
semi-adjustable articulator**

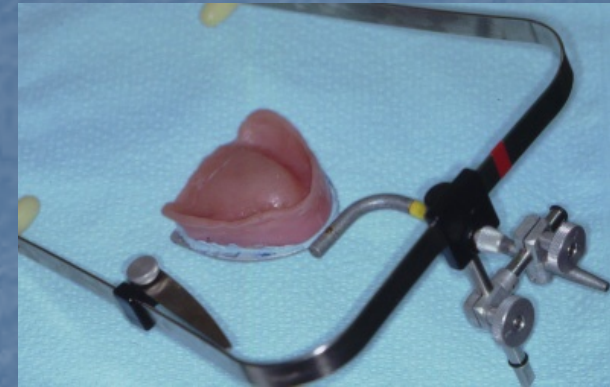
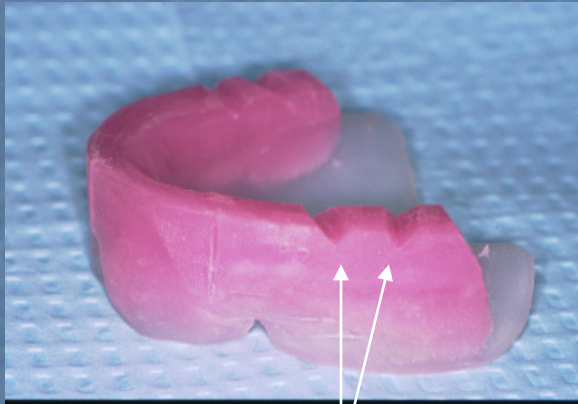
**Hanau® Spring-bow
Bite fork
Transfer clamp assembly
Mounting platform w/
built-in cast support**



**Hanau® Modular, Hanau® 96H20
semi-adjustable articulator**

Mounting the master cast to Hanau Wide-Vue articulator

- Mount the maxillary master cast with the record base and the occlusion rim using the face-bow assembly to the articulator.



1. Prepare small V-shape grooves in accurately contoured wax rim
2. Using: Spring bow, Bite fork, & transfer clamp assembly; complete face bow transfer intra-orally
3. Remove assembly and disinfect

Mounting the master cast to Hanau Wide-View articulator

- Mount the maxillary master cast with the record base and the occlusion rim using the face-bow assembly to the articulator.



4. Attach bite fork assembly to mounting jig platform w/ cast support



5. Attach the mounting platform to the lower member of the articulator as shown

Mounting the master cast to Hanau Wide-View articulator

- Mount the maxillary master cast with the record base and the occlusion rim using the face-bow assembly to the articulator.



6. Index the cast as shown with a fast cut stone on the lathe



7. Mount the maxillary cast with mounting plaster

Mounting the master cast to Hanau Wide-View articulator

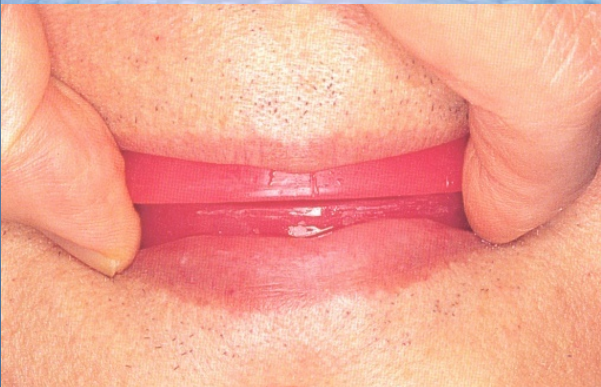
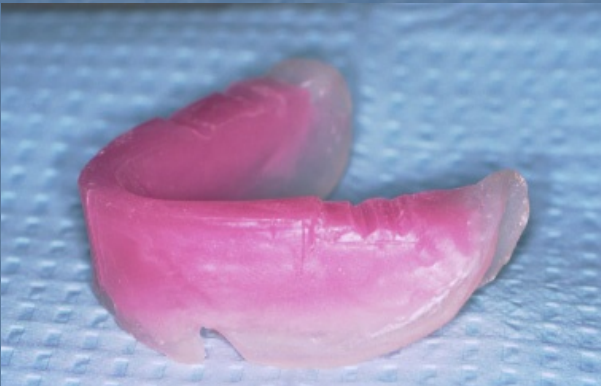
- Mount the maxillary master cast with the record base and the occlusion rim using the face-bow assembly to the articulator.



8. Successfully mounted maxillary cast

Mounting the master cast to the articulator

- Mount the mandibular master cast to the articulator with the record base and the occlusion rim using the centric relation or CR record.

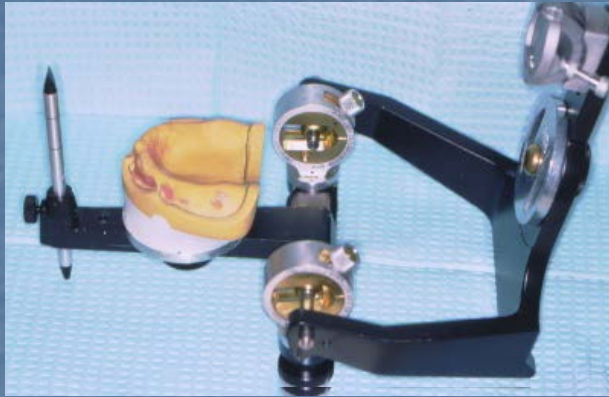


9. Using the centric relation record that was completed intra-orally, mount the mandibular cast



Mounting the master cast to the articulator

- Mount the mandibular master cast to the articulator with the record base and the occlusion rim using the centric relation or CR record.



10. Invert articulator onto the incisal pin and Bennett thumb screws



11. Place the jaw relation record onto the maxillary cast



12. Place the indexed mandibular master cast into the mandibular record base

Mounting the master cast to the articulator

- Mount the mandibular master cast to the articulator with the record base and the occlusion rim using the centric relation or CR record.



13. Mount the lower master cast with mounting plaster



14. Return articulator to upright position

Mounting the master cast to the articulator

- Mount the mandibular master cast to the articulator with the record base and the occlusion rim using the centric relation or CR record.



15. Properly mounted casts